

**METAL PROUD**  
メタルプロウド



**HVSS**

WITH DEEP WADING GEAR



**ENGINE PLUS SERIES**

MP-912102A



# U.S. SHERMAN M4(105) HOWITZER

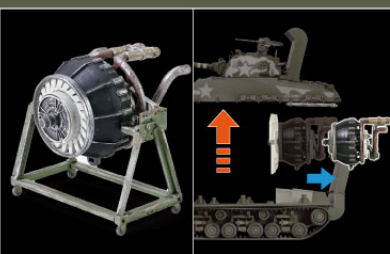
US ARMY, 711TH TANK BATTALION, OKINAWA, 1945



Die cast metal turret, upper hull, soldier body and CNC machined aluminium gun barrel.



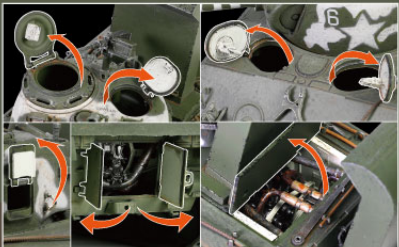
Authentic casting textures across all tank surface.



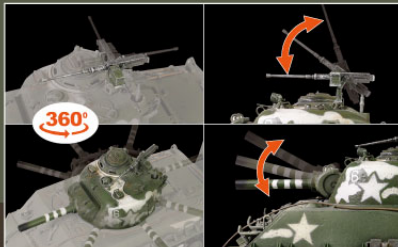
Precise replica Wright R-975 Whirlwind engine with stand.



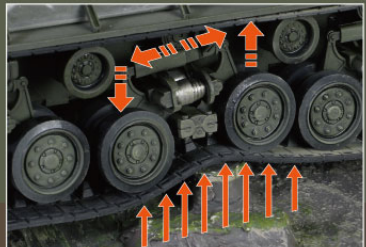
Detachable deep wading gear.



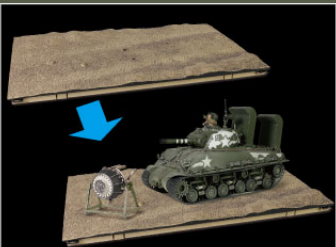
Openable hatches



Movable M2 Browning machine gun, turret and gun barrel.



Free rolling wheels & real Horizontal Volute Spring Suspension (HVSS) design.



Realistic landscape display.

**WALTERSONS**



Waltersons Distribution Limited  
Unit 2 Colthrop Business Park Colthrop lane  
Thatcham Berkshire, RG19 4NB United Kingdom  
Email: info@waltersonsuk.com

**WALTERSONS**  
Waltersons Industry Limited  
Unit S-T, 5/F, 2-12 Au Pui Wan Street  
Valiant Industrial Center, Fo Tan  
New Territories, Hong Kong  
Email: info@waltersons.com

ケタ違いの情熱  
**WALTERSONS**  
9-41, Hachigaya Minami-cho,  
Shimizu, Shizuoka, 424-0004,  
Japan  
Phone 090-9125-6099

## METAL PROUD



WRIGHT R-975 WHIRLWIND WITH STAND !

## U.S. SHERMAN M4(105) HOWITZER

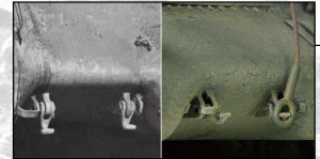
### MAIN GUN



105MM M4 HOWITZER

The 105mm gun barrel can be equipped with more destructive high-explosive shells to attack enemy positions.

### TOWING SHACKLES



Improved T-shaped towing shackles.

### TRACK



T-66 HVSS

The first for HVSS track type and with double arc tire pattern.

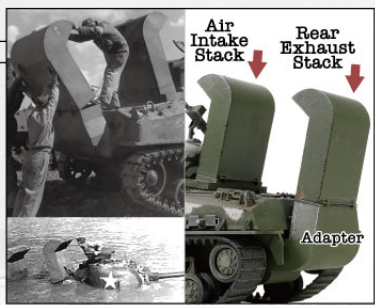
### SUSPENSION



HVSS

The HVSS system is heavier, stronger and increased maintenance and mobility.

### DEEP WADING GEAR



Equipped with waterproof hulls and air intake and exhaust stacks.

### ENGINE



WRIGHT R-975 WHIRLWIND ENGINE

Provided for powerplant for the early M4 Sherman.



# WALTERSONS

